

ITEM NO.	PART NUMBER	DESCRIPTION	MATERIAL	QTY.
1	25-004-0001_01	Quadratrohr 200 x 200 DIN EN 10210, Länge: 1.120mm	1.0570 (S355J2G3)	1
2	25-004-0001_02	Blech 6mm	1.0570 (S355J2G3)	1
3	25-004-0001_03	HE-B 100 DIN EN 1052-2, Länge: 1.120mm	1.0570 (S355J2G3)	1
4	25-004-0001_04	Rechteckrohr 200 x 100 DIN EN 10210, Länge: 1.120mm	1.0570 (S355J2G3)	2
5	25-004-0001_05	Rechteckrohr 200 x 100 DIN EN 10210, Länge: 1.470mm	1.0570 (S355J2G3)	2
6	25-004-0001_07	Blech 25mm	1.0570 (S355J2G3)	2
7	25-004-0001_08	Blech 6mm	1.0570 (S355J2G3)	6
8	25-004-0001_09	Blech 100mm	1.0570 (S355J2G3)	2
9	25-004-0001_10	Blech 6mm	1.0570 (S355J2G3)	1
10	25-004-0001_11	Flach 40mm x 100mm x 1.175mm	1.0570 (S355J2G3)	1
11	25-004-0001_12	Rechteckrohr 160 x 80 DIN EN 10210, Länge: 400mm	1.0570 (S355J2G3)	1
12	25-004-0001_13	Rechteckrohr 160 x 80 DIN EN 10210, Länge: 280mm	1.0570 (S355J2G3)	1
13	25-004-0001_14	Blech 5mm	1.0570 (S355J2G3)	1
14	25-004-0002 Stützlager links			2
15	25-004-0003 Stützlager rechts			2
16	25-004-0001_16	Blech 25mm	1.0570 (S355J2G3)	2
17	25-004-0001_22	Blech 6mm	1.0570 (S355J2G3)	12
18	25-004-0001_19	Blech 10mm	1.0570 (S355J2G3)	4
19	25-004-0001_21	Blech 10mm	1.0570 (S355J2G3)	4
20	25-004-0001_24	Blech 20mm	1.0570 (S355J2G3)	4
21	25-004-0001_25	Blech 5mm	1.0570 (S355J2G3)	2
22	25-004-0001_23	Blech 6mm	1.0570 (S355J2G3)	2
23	25-004-0001_26	Blech 10mm	1.0570 (S355J2G3)	4

Ausführungsklasse EXC 2 DIN EN 1090
 Ausführungsvorschriften:
 Fertigung nach DIN EN 1090
 Nahtvorbereitung nach DIN EN 29692
 Kanten entgratet

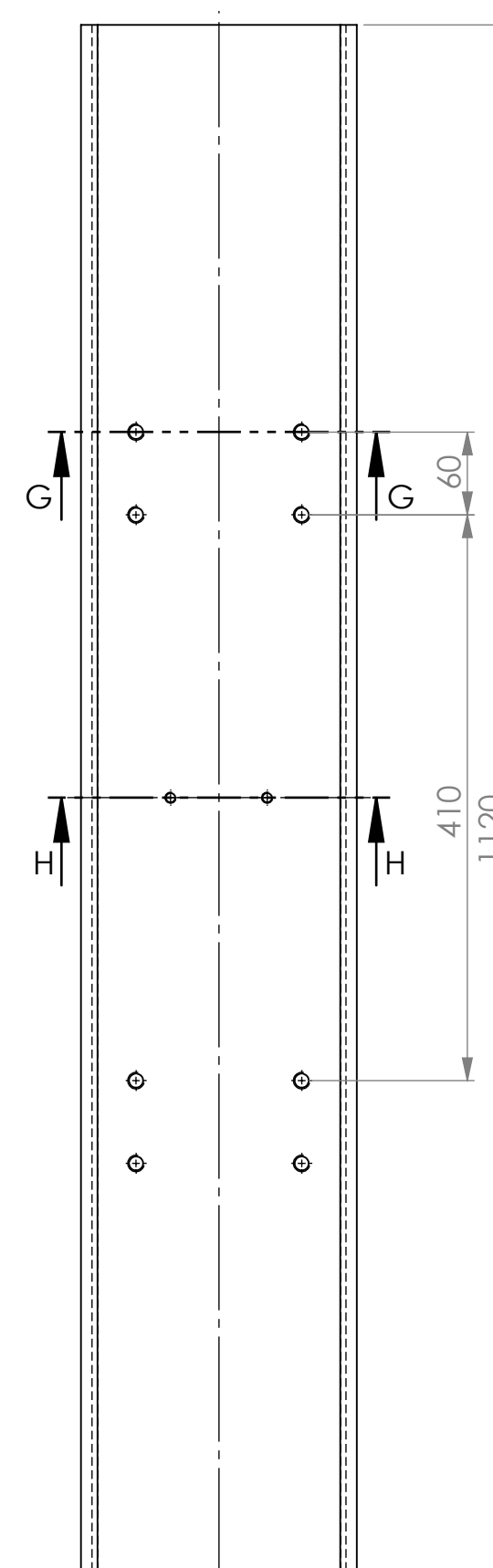
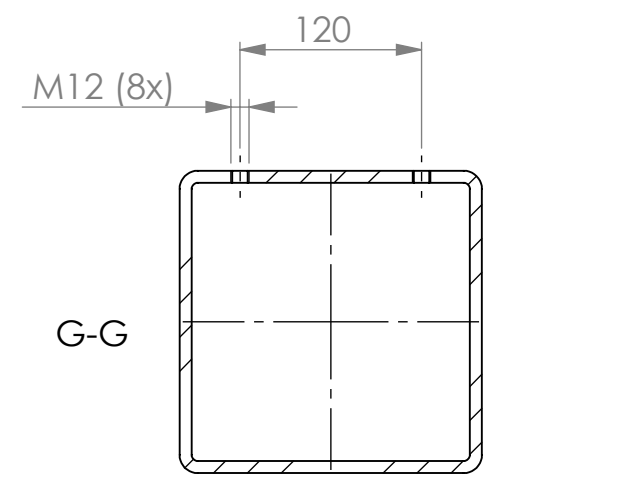
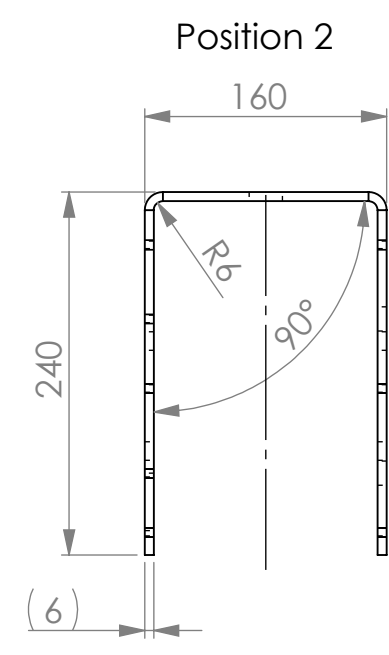
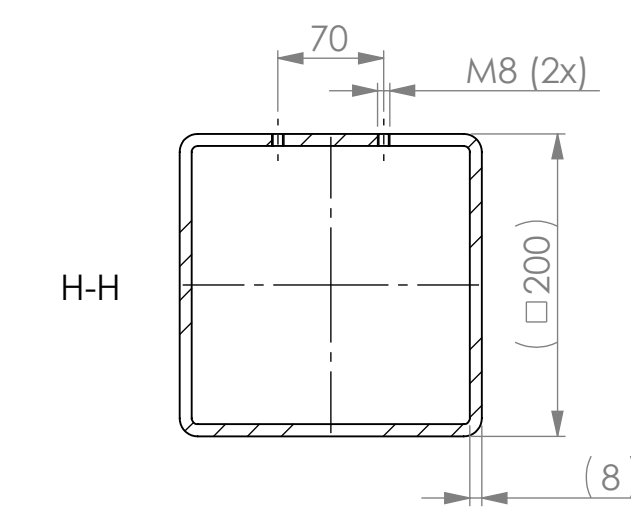
Mäße ohne Toleranzangabe DIN ISO 2768-m
 Schweißkonstruktion DIN EN ISO 5817-D

Oberflächenbeschichtung gemäß Kundenvorgabe
 Lackiert: RAL 1021 (Rostgelb)
 Bearbeitete Flächen nicht lackiert
 Gewinde und Bohrungen abgedeckt

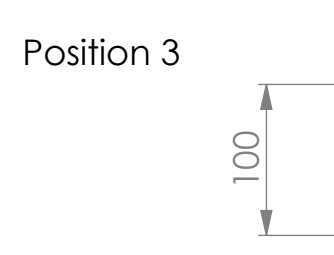
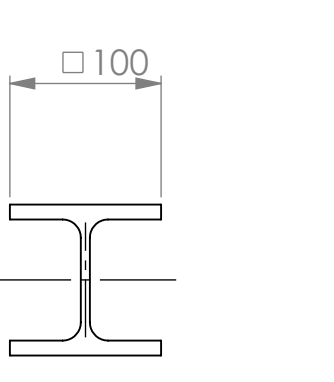
geschweißt
 gerichtet und sauber verputzt
 Alle Nähte durchgehen

Schweißnahtangaben:
 So weit nicht anders bemäßt
 alle Keilnähte $\phi=0,5x1$
 alle Stupfnähte voll durchgeschweißt

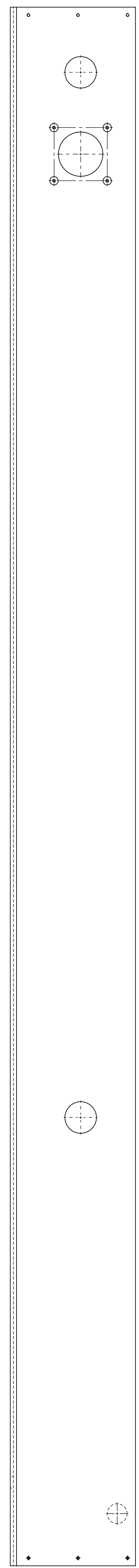
REVISIONEN	ÜBERWACHUNG	PROJEKTION	MASSSTAB: 1:15	GEWICHT: 740kg
01	01	01	Grundgestell	
QLS-GmbH D-47460 Ahaus			25-004-0001	A0



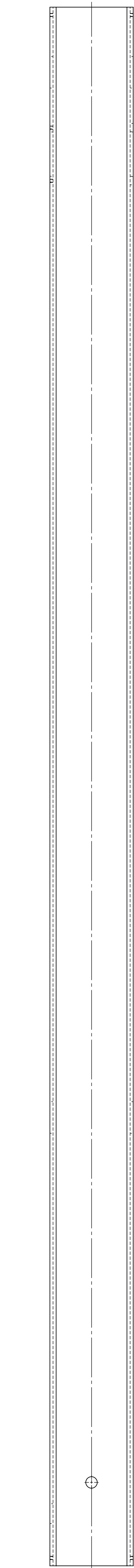
Position 1



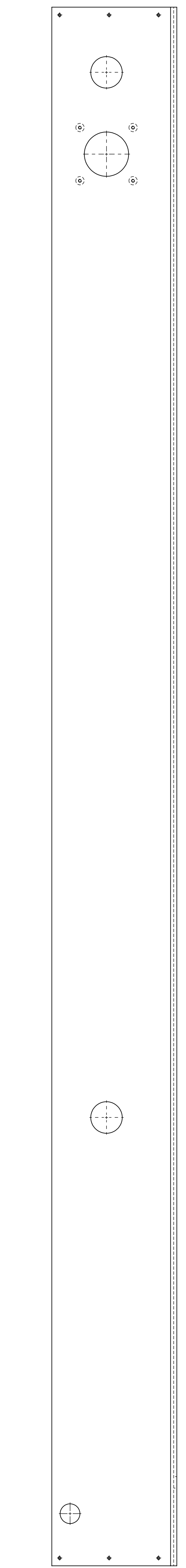
Position 3



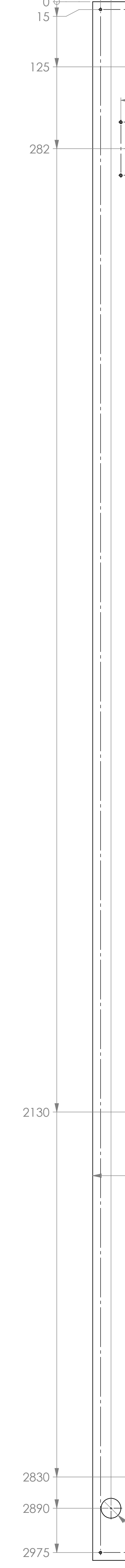
Position 16 (2x)



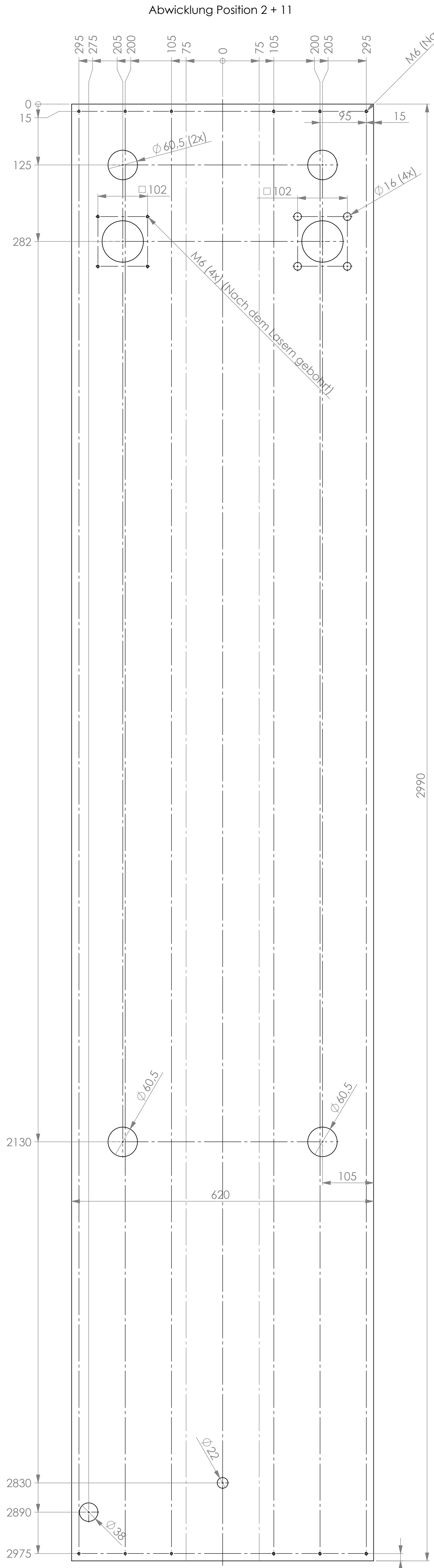
Position 17 (12x)



Position 18 (4x)



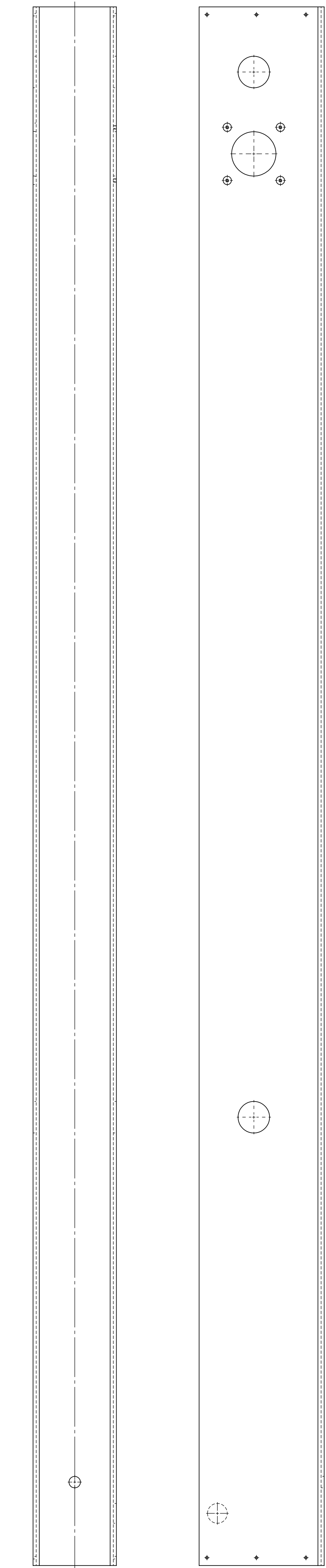
Position 19 (4x)



Abwicklung Position 2 + 11

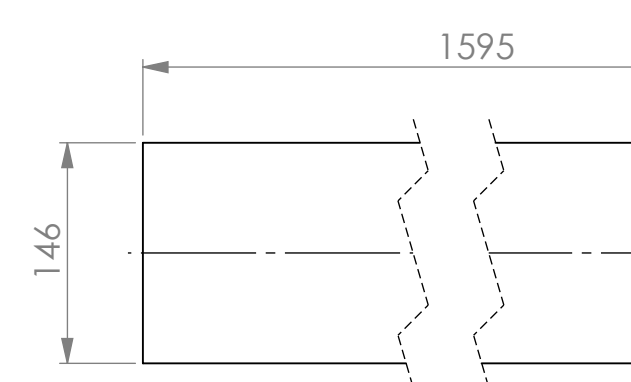
Position 9 (Spiegelbildlich zu Position 2)

Position 9 (Spiegelbildlich zu Position 2)



Position 9 (Spiegelbildlich zu Position 2)

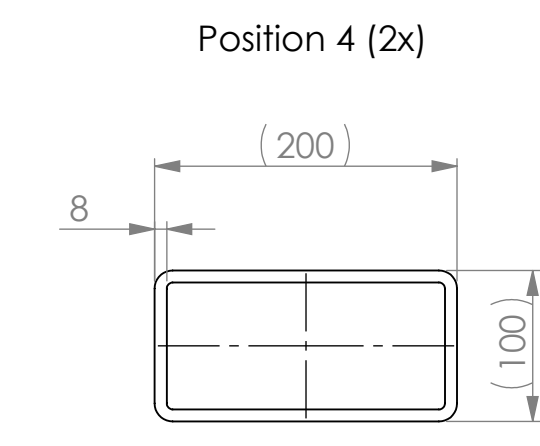
Position 20 (2x)



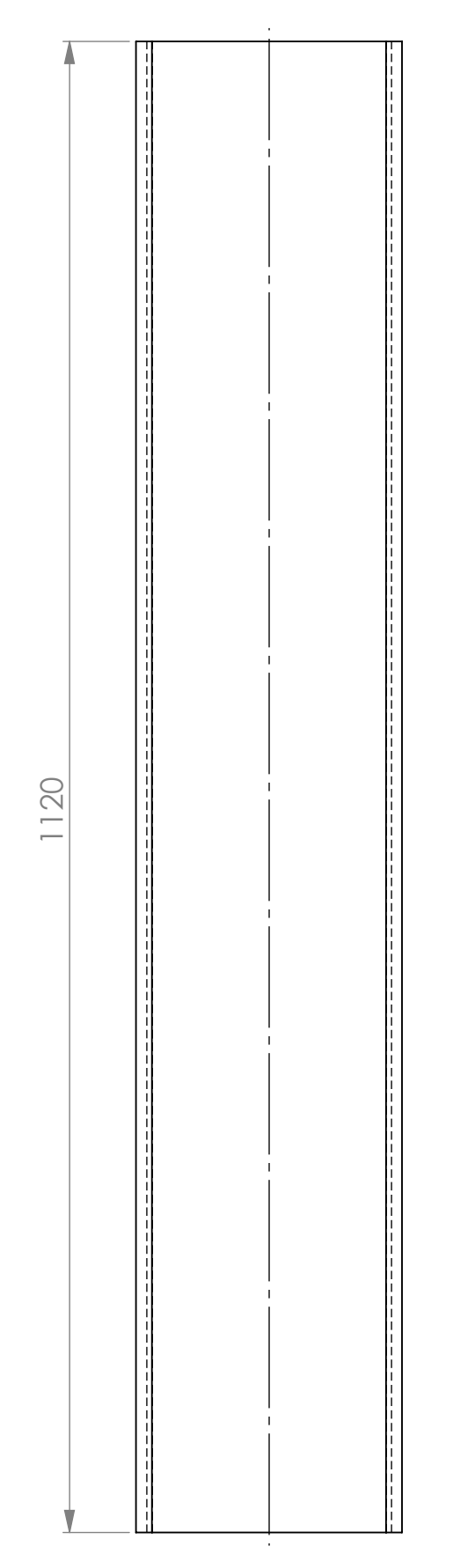
Position 20 (2x)

Position 21 (4x)

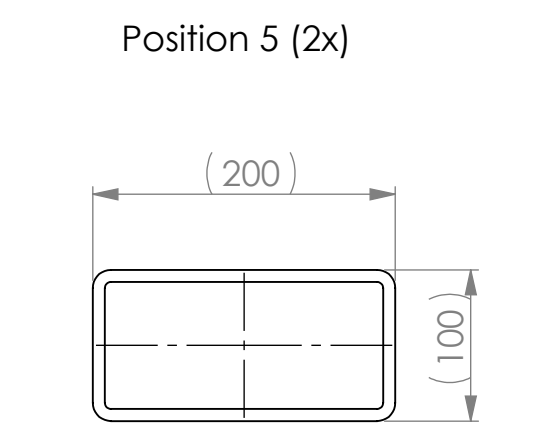
Position 4 (2x)



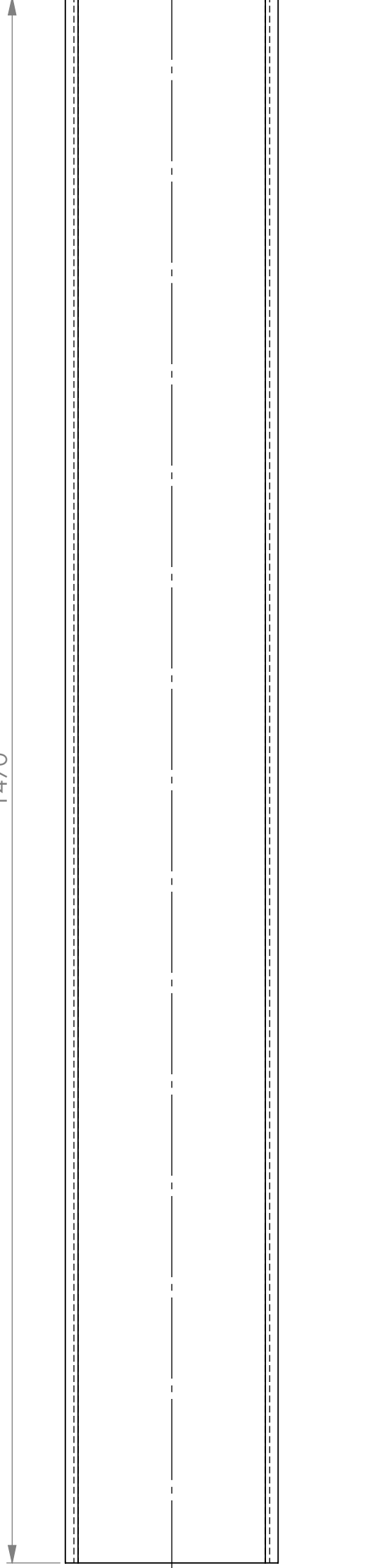
Position 4 (2x)



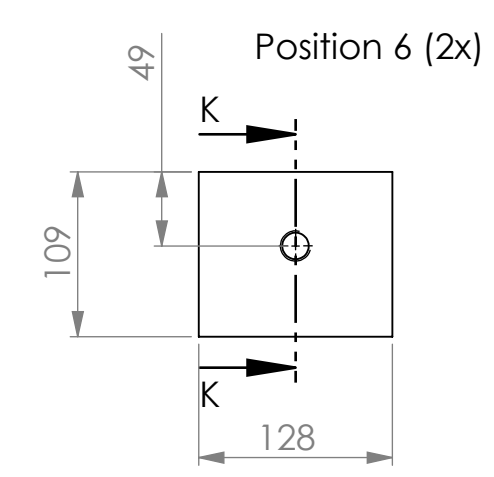
Position 4 (2x)



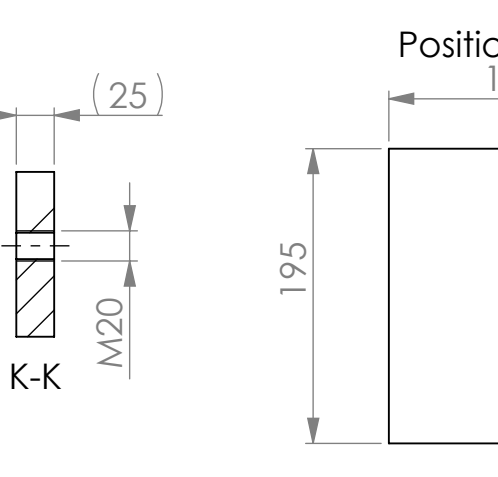
Position 5 (2x)



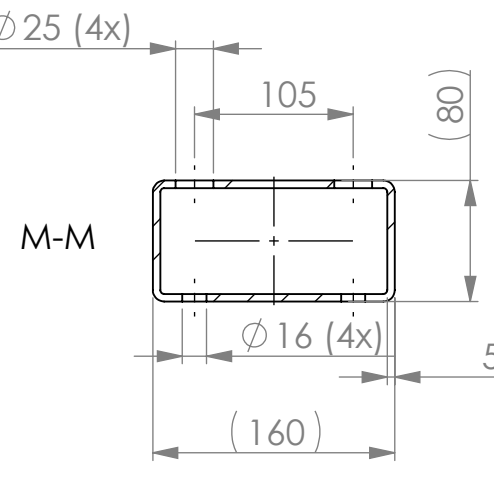
Position 5 (2x)



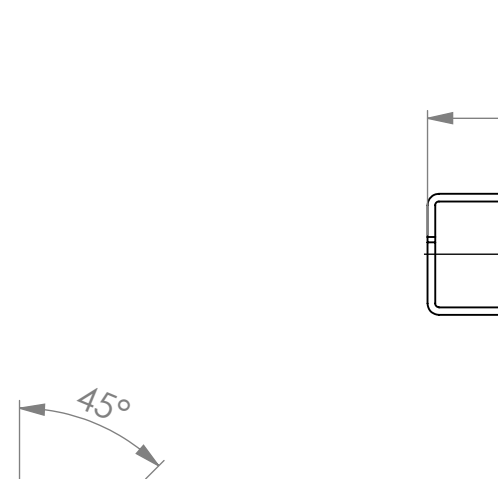
Position 6 (2x)



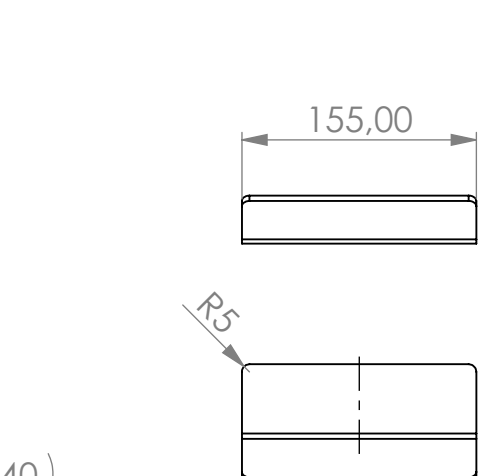
Position 7 (6x)



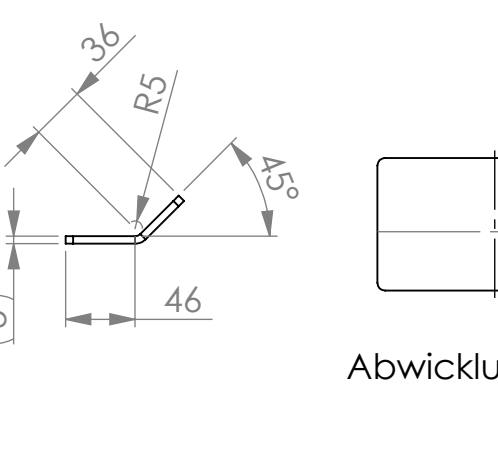
Position 11



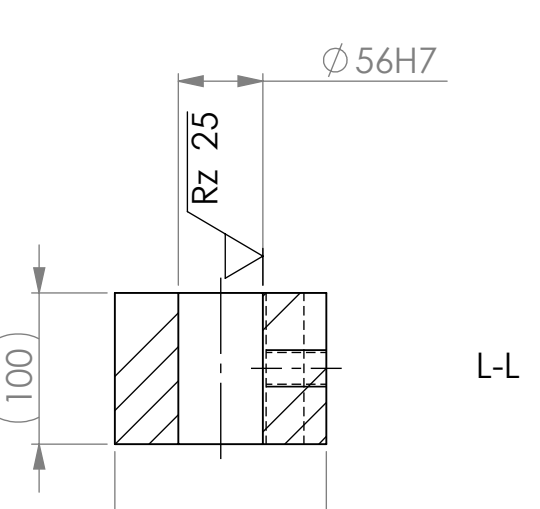
Position 12



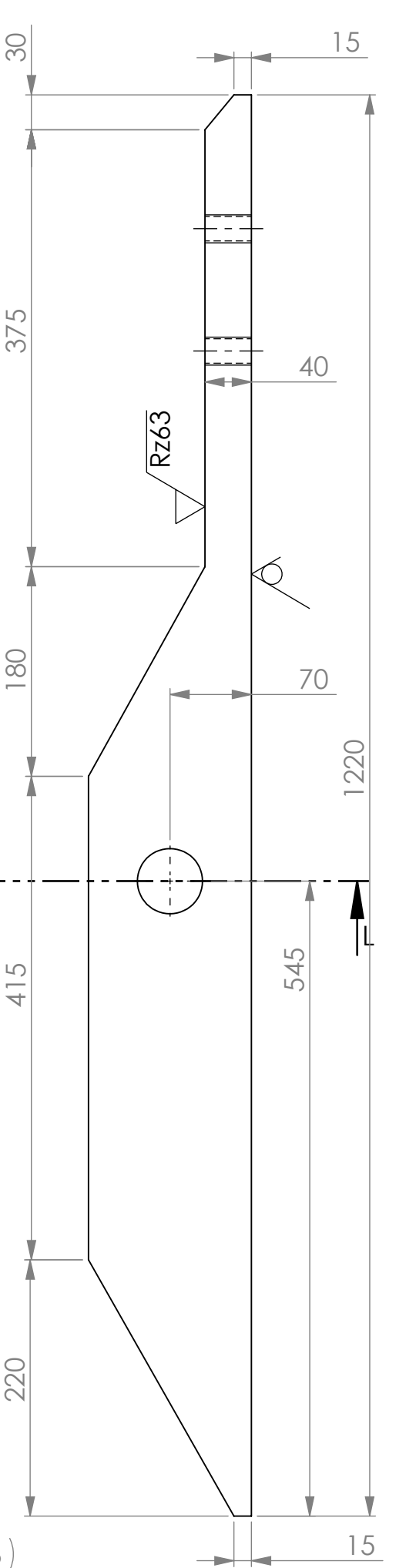
Position 13



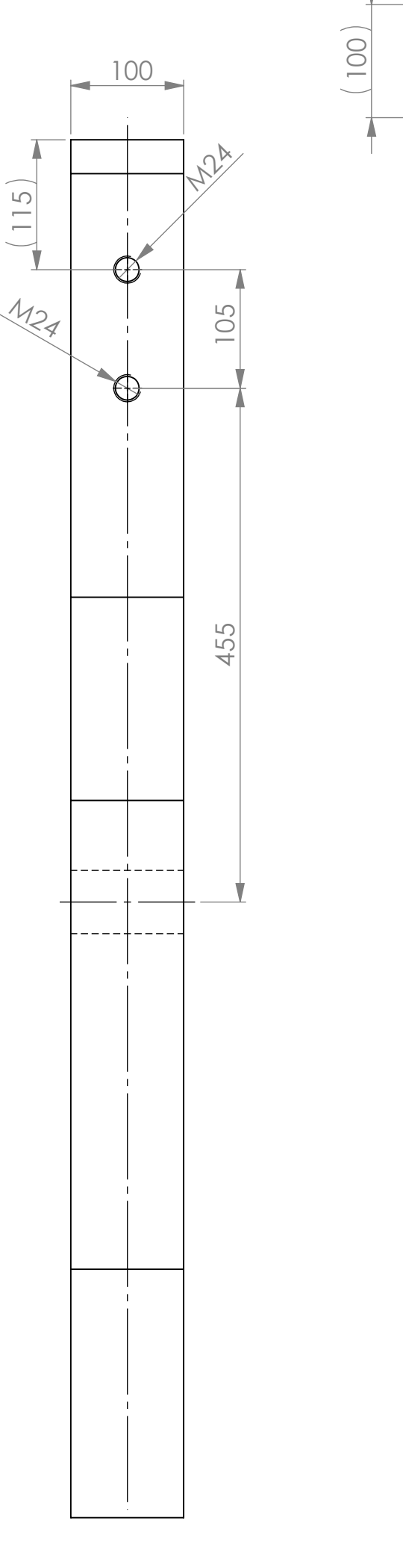
Abwicklung Position 13



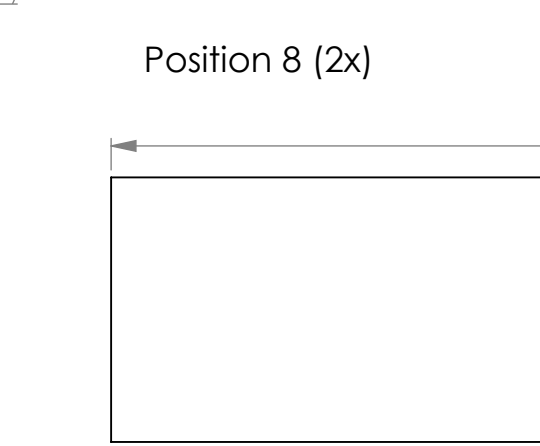
Position 11



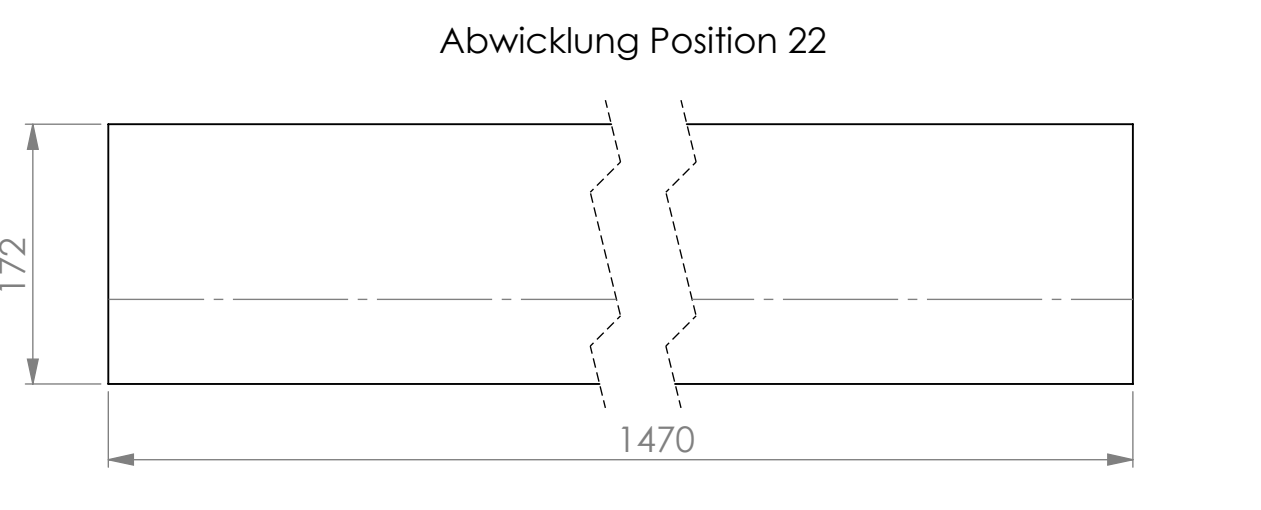
Position 8 (2x)



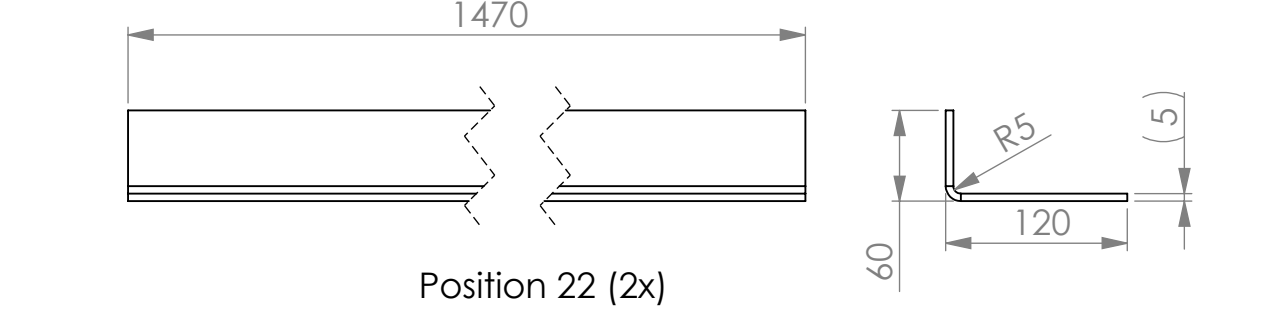
Position 10



Position 8 (2x)



Abwicklung Position 22



Position 22 (2x)

ITEM NO.	PART NUMBER	DESCRIPTION	MATERIAL	QTY.
1	25-004-0001_01	Quadratröhr 200 x 200 DIN EN 10210, Länge: 1.120mm	1.0570 (S355J2G3)	1
2	25-004-0001_02	Blech 6mm	1.0570 (S355J2G3)	1
3	25-004-0001_03	HE-B 100 DIN EN 1052-2, Länge: 1.120mm	1.0570 (S355J2G3)	1
4	25-004-0001_04	Rechteckröhr 200 x 100 DIN EN 10210, Länge: 1.120mm	1.0570 (S355J2G3)	2
5	25-004-0001_05	Rechteckröhr 200 x 100 DIN EN 10210, Länge: 1.470mm	1.0570 (S355J2G3)	2
6	25-004-0001_07	Blech 25mm	1.0570 (S355J2G3)	2
7	25-004-0001_08	Blech 6mm	1.0570 (S355J2G3)	6
8	25-004-0001_09	Blech 100mm	1.0570 (S355J2G3)	2
9	25-004-0001_10	Blech 6mm	1.0570 (S355J2G3)	1
10	25-004-0001_11	Flach 40mm x 100mm x 1.175mm	1.0570 (S355J2G3)	1
11	25-004-0001_12	Rechteckröhr 160 x 80 DIN EN 10210, Länge: 400mm	1.0570 (S355J2G3)	1
12	25-004-0001_13	Rechteckröhr 160 x 80 DIN EN 10210, Länge: 280mm	1.0570 (S355J2G3)	1
13	25-004-0001_14	Blech 5mm	1.0570 (S355J2G3)	1
14	25-004-0002 Stützträger links			2
15	25-004-0003 Stützträger rechts			2
16	25-004-0001_16	Blech 25mm	1.0570 (S355J2G3)	2
17	25-004-0001_22	Blech 6mm	1.0570 (S355J2G3)	12
18	25-004-0001_19	Blech 10mm	1.0570 (S355J2G3)	4
19	25-004-0001_21	Blech 10mm	1.0570 (S355J2G3)	4
20	25-004-0001_24	Blech 20mm	1.0570 (S355J2G3)	4
21	25-004-0001_25	Blech 5mm	1.0570 (S355J2G3)	2
22	25-004-0001_23	Blech 6mm	1.0570 (S355J2G3)	2
23	25-004-0001_26	Blech 10mm	1.0570 (S355J2G3)	4

MASSSTAB: 1:15
 GEWICHT: 740kg
 QLS-GmbH
 25-004-0001
 Grundgestell

